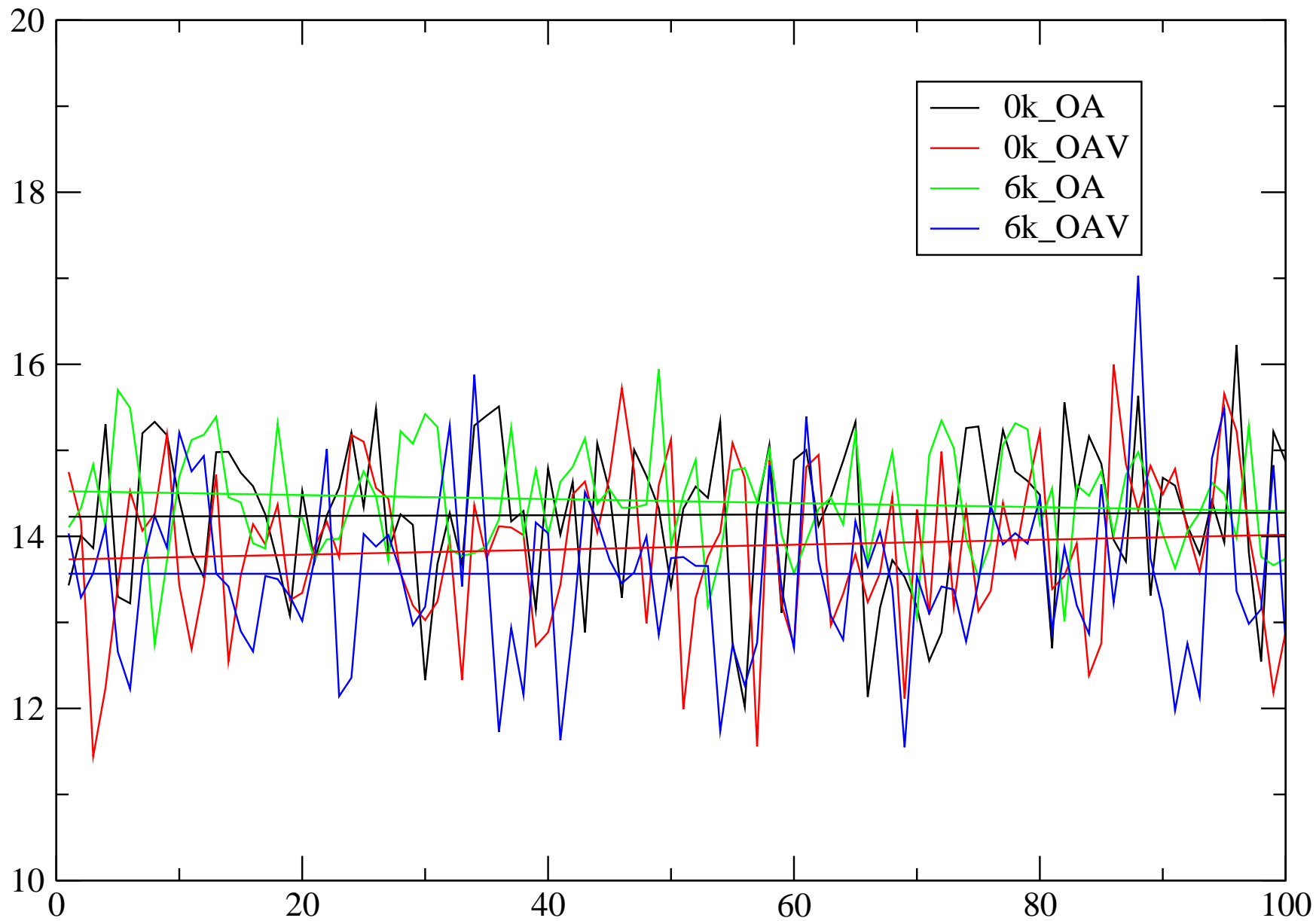
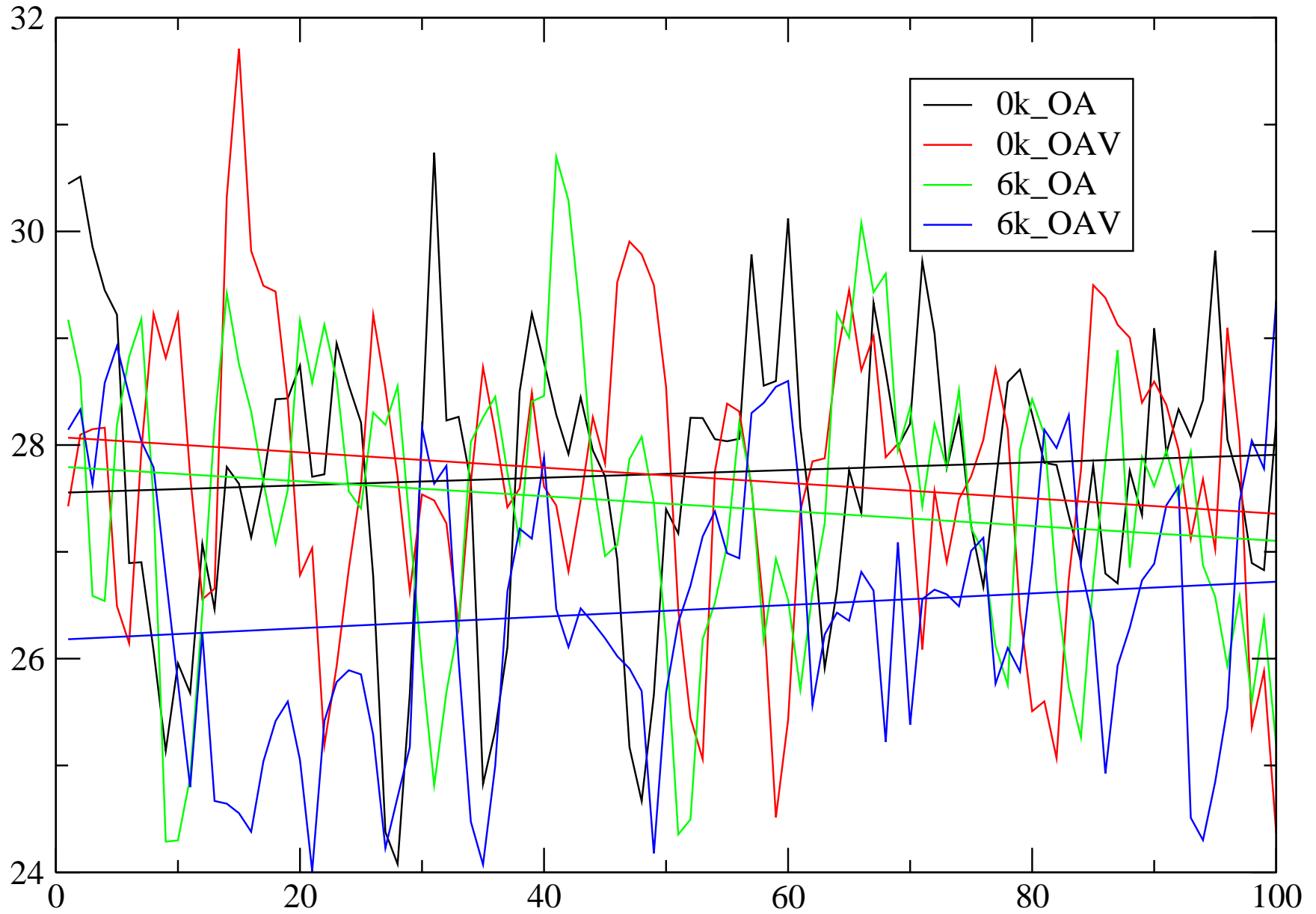


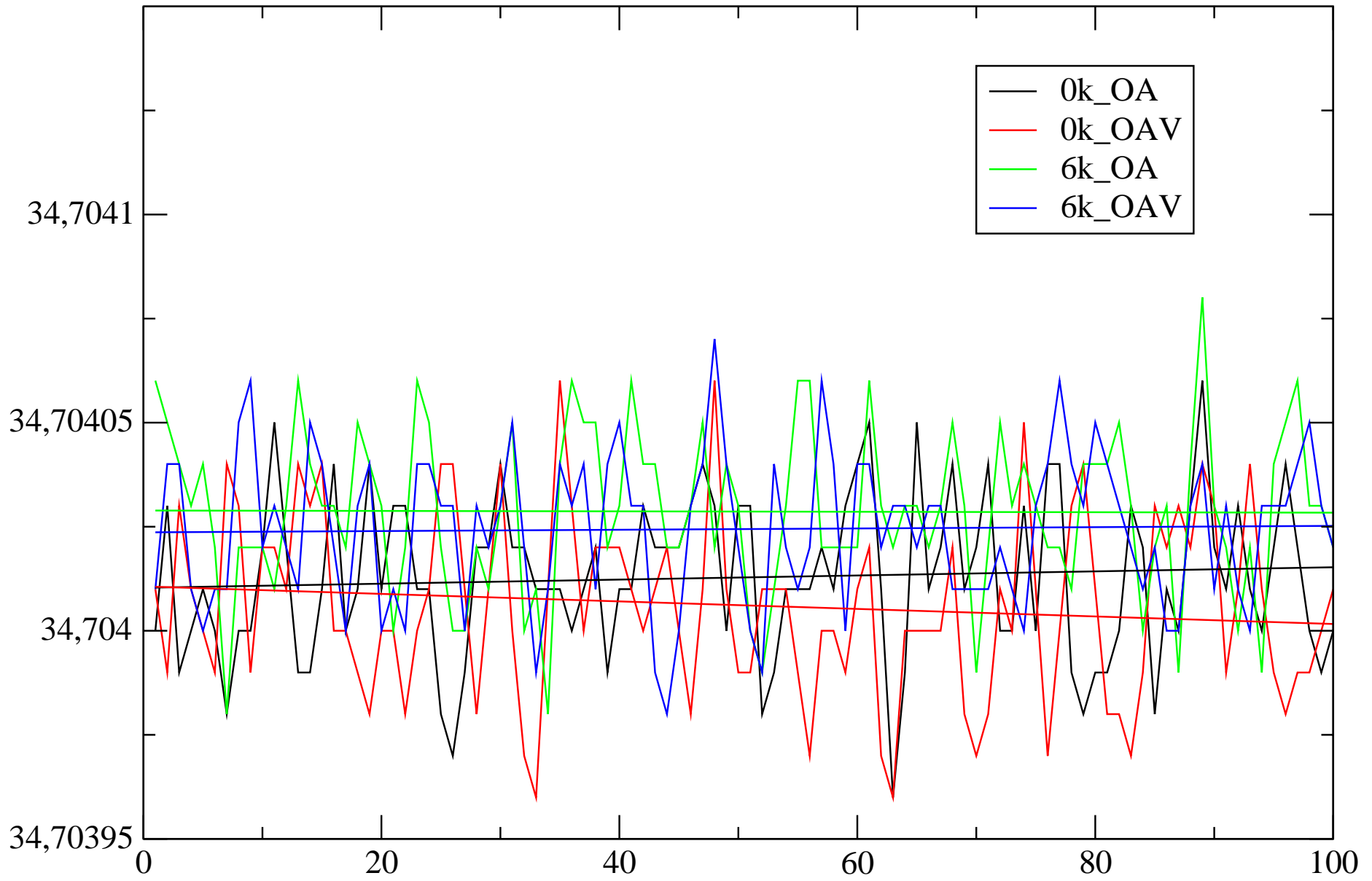
Atlantic flow to Southern Ocean (Sv) at 30S



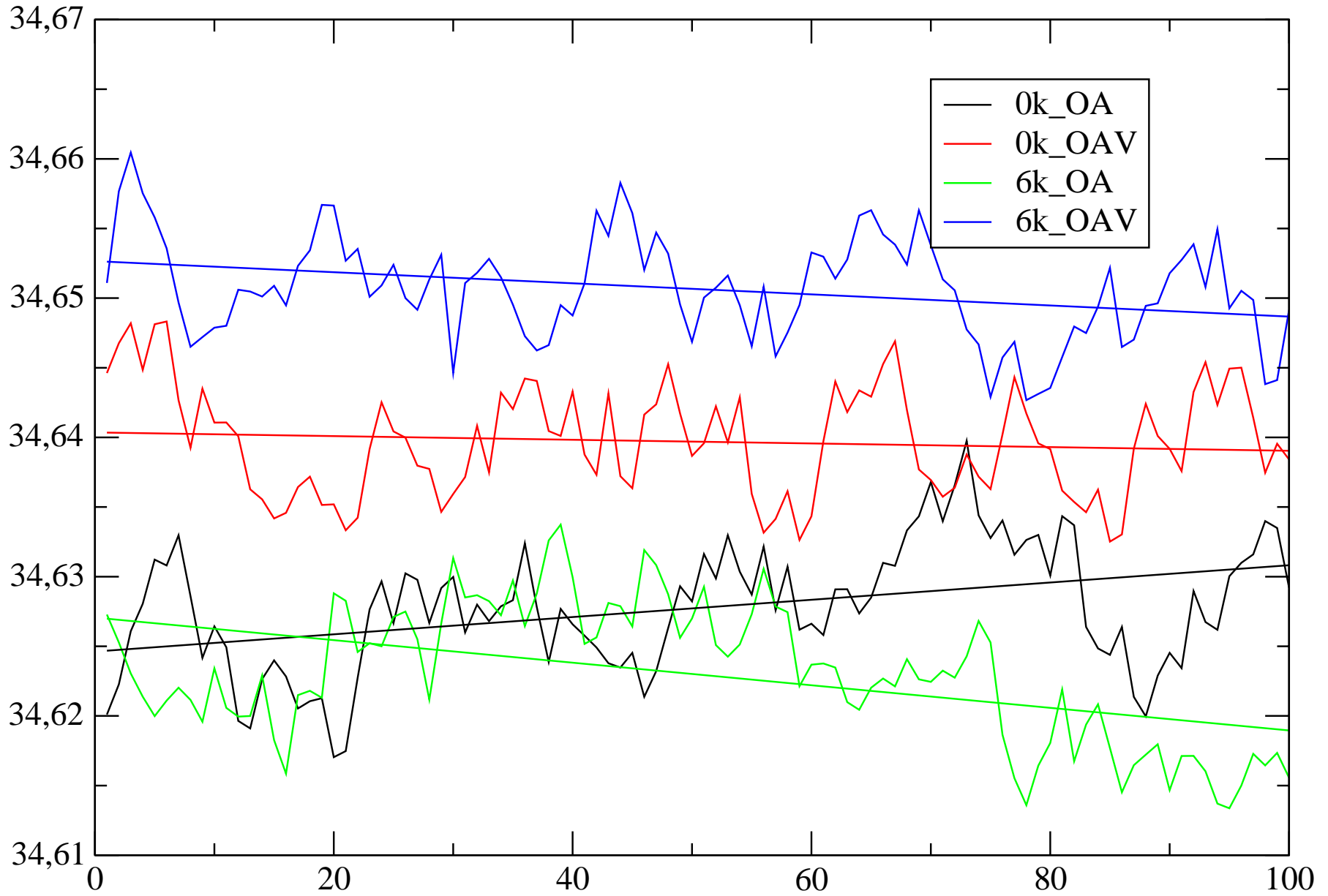
Atlantic THC index (Sv)



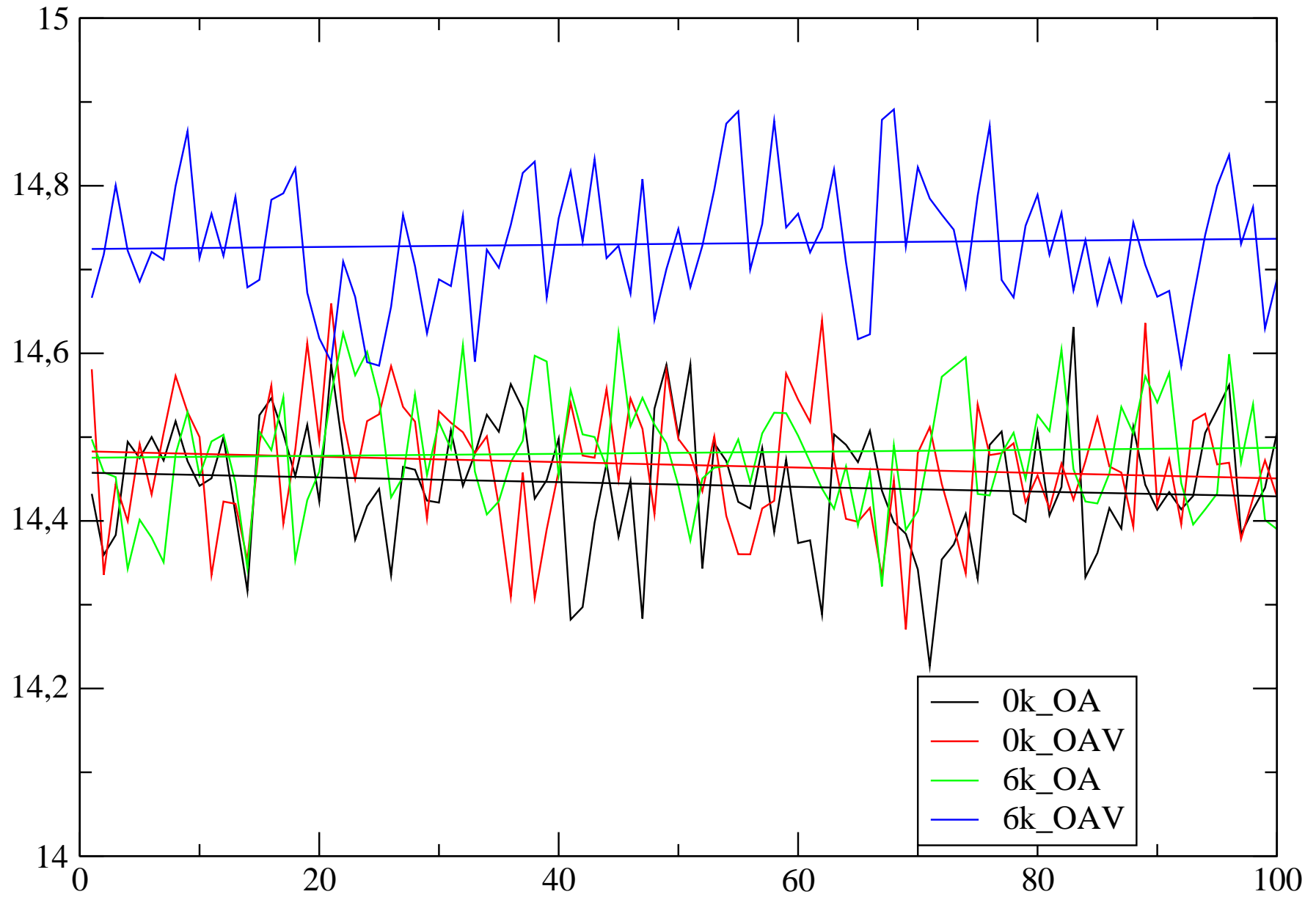
Global Ocean salinity (psu)



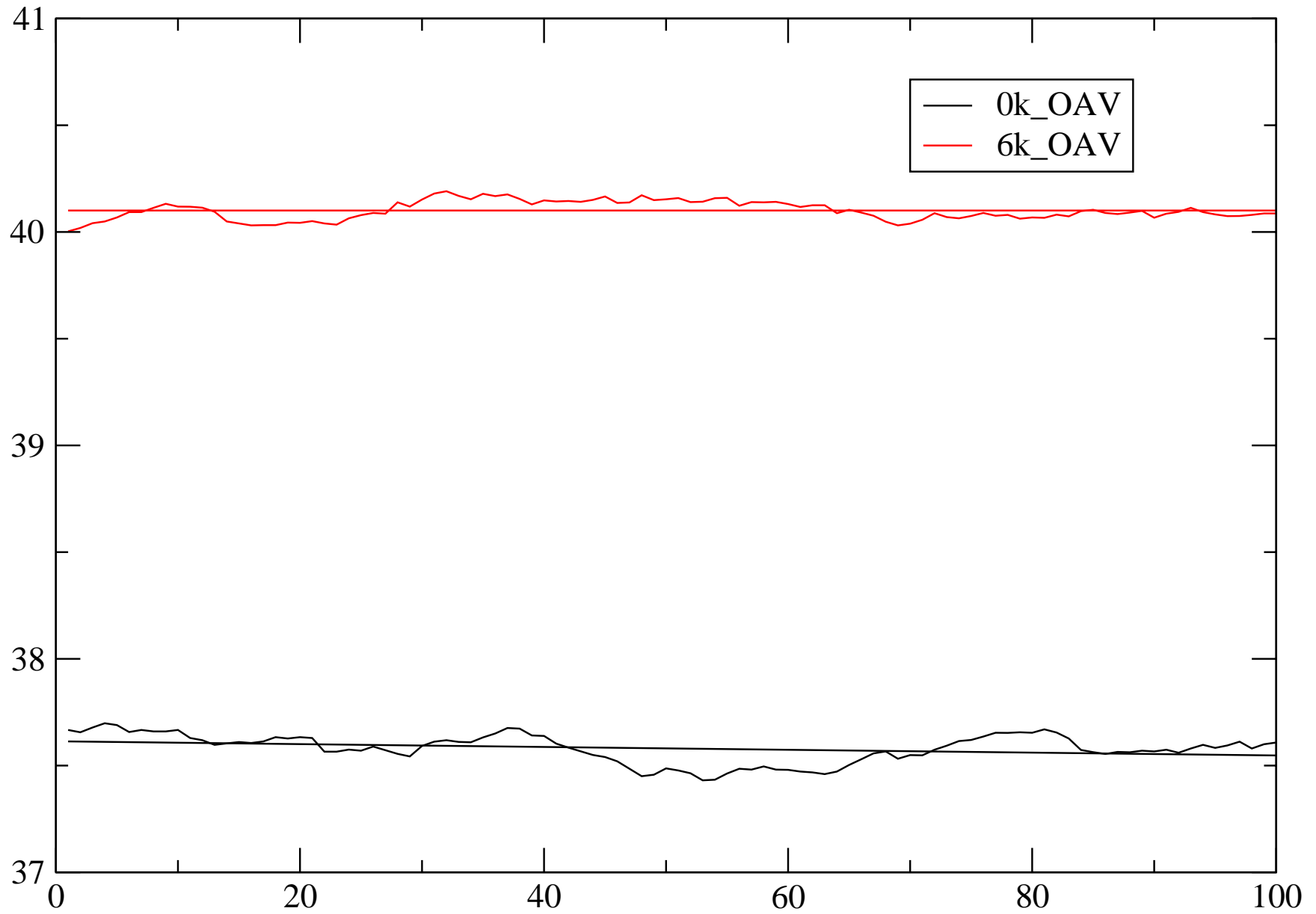
Global sea surface salinity (psu)

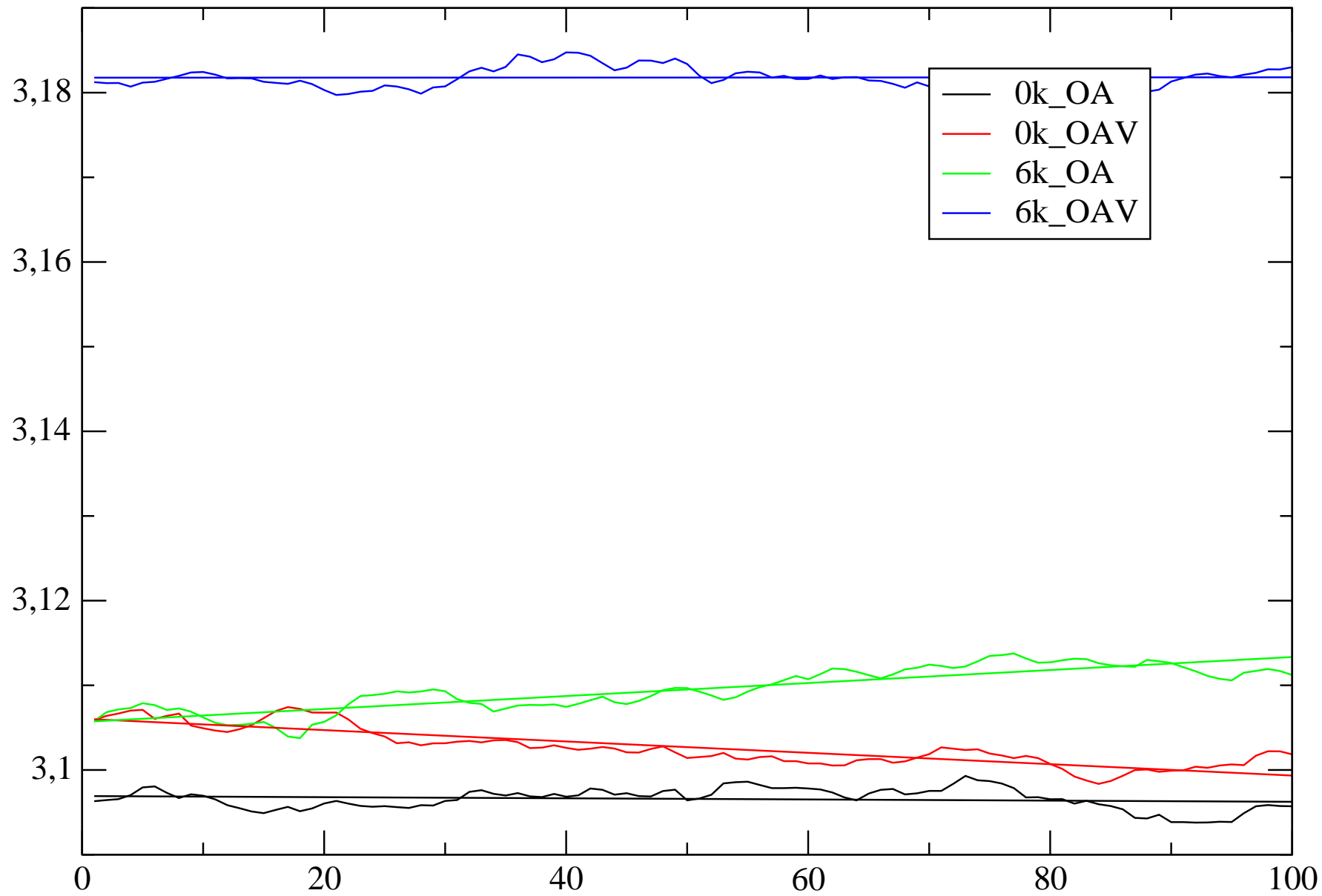


Global 2m temperature ($\hat{A}^{\circ}\text{C}$)

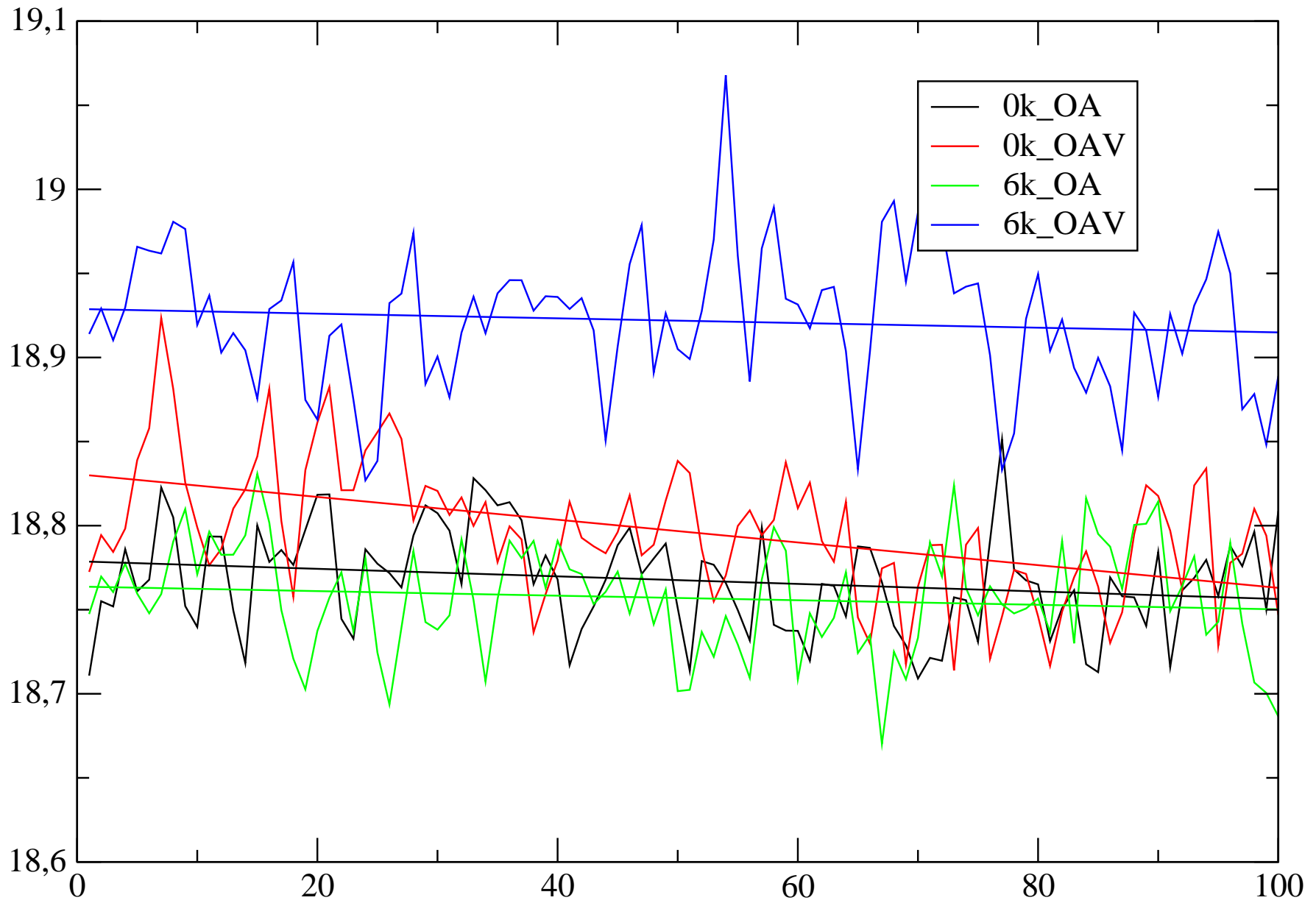


Evolution of forest area (%)

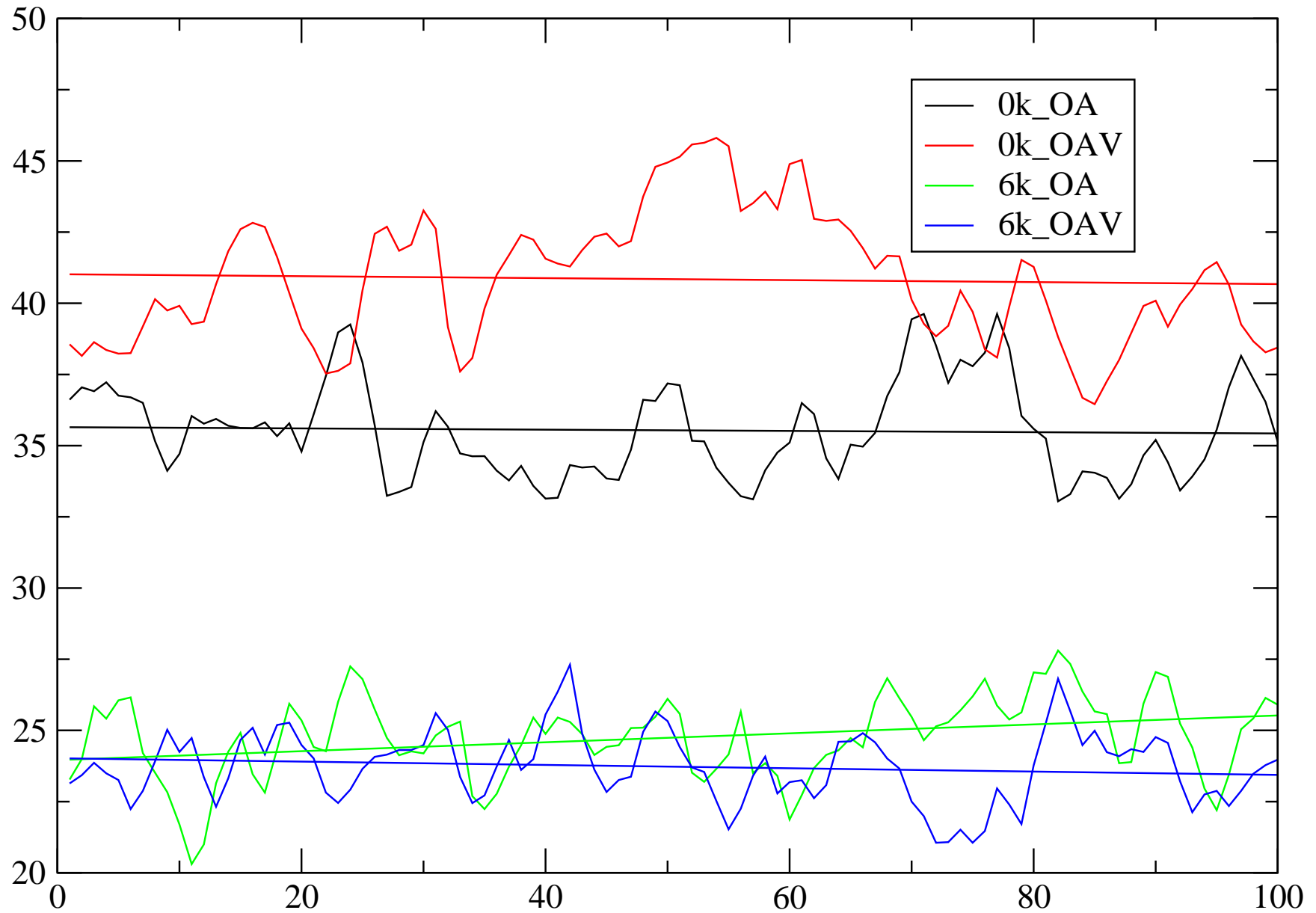




Global sea surface temperature ($\hat{A}^{\circ}\text{C}$)



Annual mean sea-ice volume NH (10^6 km^3)



Annual mean sea-ice volume SH (10^3km^3)

